

2020 Regional Time Schedule for **BUCKLEY SCHOOL**

305 S First Street, Buckley - school/course location

Saturday, October 31, 2020

With the end of the 2020 season upon us, we are happy to host the MHSAA Regional races. Due to MHSAA restrictions, races cannot exceed 70 participants. Following the MHSAA safety precautions, we still will provide the kids the opportunity to compete in the first races headed to the MHSAA State Finals.

To maintain the MHSAA protocols we will be using the following schedule for the day of races --

Online ticketing will be used for these events -- please share the links with your spectators / parents <http://michianatiming.com/registration/enter1.php?raceid=289>

Division 4 -- Pre-Regional #57 & #58 --- ticket sales

<http://michianatiming.com/registration/enter1.php?raceid=289>

8:30 arrival

9:15 boys

9:45 girls

10:30 gone

Division 3 -- Pre-Regional #39 & #40 -- ticket sales

<http://michianatiming.com/registration/enter1.php?raceid=289>

10:45 arrival

11:30 boys

12:00 girls

12:45 gone

Division 2 -- Pre-Regional #19 & #20 -- ticket sales

<http://michianatiming.com/registration/enter1.php?raceid=289>

1:00 arrival

1:45 boys

2:15 girls

3:00 gone

Division 1 -- Pre-Regional #1 & #2 -- ticket sales

<http://michianatiming.com/registration/enter1.php?raceid=289>

3:15 arrival

4:00 boys

4:30 girls

5:15 gone

The MHSAA Cross Country Guidelines will be strictly adhered to at all times - Masks on all participants (except when directed to remove them by the Starter - MHSAA Official), all coaches, and spectators will wear face coverings at all times while on the school property. THIS IS THE ONLY WARNING THAT WILL BE GIVEN - the only way to finish the season is to follow the guidelines -- NO EXCEPTIONS.

MHSAA GUIDELINES & PROTOCOLS --

- 1) Schools please arrive at the designated times and your bus/transportation will be directed to a specific team area. No tents to be set up -- as you will be leaving following the last race.
- 2) Coaches are to turn in a completed MHSAA COVID 19 form when picking up team packets.
- 3) Participating schools will contact Karen Leinaar - 231-218-6983 (karenleinaar@gmail.com) immediately if an athlete or coach on their team tests positive for COVID 19 within 14 days of the event so contact tracing can begin immediately.
- 4) Benzie Central school buildings will not be open for this event.
- 5) Master Eligibility Forms are due to Karen Leinaar - karenleinaar@gmail.com by Oct 26 to be eligible to run in the Regionals.

QUALIFYING TEAMS & INDIVIDUALS --

- 1) Team areas will be assigned upon arrival -- we expect that is where your team will gather and leave their belongings -- we do not want tents unless the weather requires it -- you will have a porta john in your area.
- 2) Individual qualifiers will be sent to the baseball / softball fields for their areas -- there are designated restrooms available for these athletes too.
- 3) These designated areas allow for easy identification for contact and distributing awards at the end of the events.

RACE INFORMATION --

- 1) Designated arrival time is very important as is departure as soon as possible at the conclusion of each Divisions. We will need to clean in between Divisions to provide a safe and healthy event.
- 2) Less than 70 runners in each race - to meet MHSAA Guidelines.
- 3) Water jugs will be available near the finish area -- for participating athletes -- using a single cup per athlete. Please dispose of all paper products properly.
- 4) SUBSTITUTIONS -- Deadline of changes 30 prior to the first race of each session.

COURSE INFORMATION --

- 1) The course finish will be different than in past years (but the same as it has been during this race season) behind the start area. This set up allows for participants to immediately exit to their team areas when the race is completed. The course map is posted on A.net and MHSAA.com -- Cross Country
- 2) Each team will have an assigned box to them.
- 3) Each team will have an assigned area for run outs, strides and team gatherings to reduce bunching in the start area.

WARM UPS & COOL DOWNS --

- 1) Each session will begin 45 minutes before the first race in that session (boys race).
There will be time to view the course -- we will also have a course map and video for all to view prior to the race
- 2) There will be minimal warm ups or cool downs done on the course.
- 3) Boys warm up can be done on site and then they can do their final drills and strides at the start line.
- 4) Girls can warm up in the track area.

SPECTATORS --

- 1) With the new limitations on spectators we will be selling online and online only.
- 2) Spectators must have a face covering -- NO EXCEPTIONS (INCLUDING MEDICAL) -- Violators will be asked to leave immediately -- PLEASE COMMUNICATE THIS TO YOUR PARENTS.
- 3) As we all know this is the only way for our RUNNERS TO FINISH THEIR SEASONS. Please assist in this enforcement - **they are the MHSAA guidelines and disqualification could be imposed.**
- 4) There will be designated parking for all spectators and they are expected to leave immediately following each Division to allow the next Division to enter the race area as soon as possible.
- 5) Online ticketing information and ability to purchase --please share with parents and spectators -- this will speed up entrance to the event and allow for quicker turn arounds for everyone.
- 6) PROPERLY MARKED DOGS ARE ALLOWED - NO UNMARKED DOGS / ANIMALS ARE ALLOWED -- THIS IS A SAFETY AREA AND WE WILL EXPECT SCHOOLS TO COMMUNICATE THIS TO THEIR FANS & PARENTS.

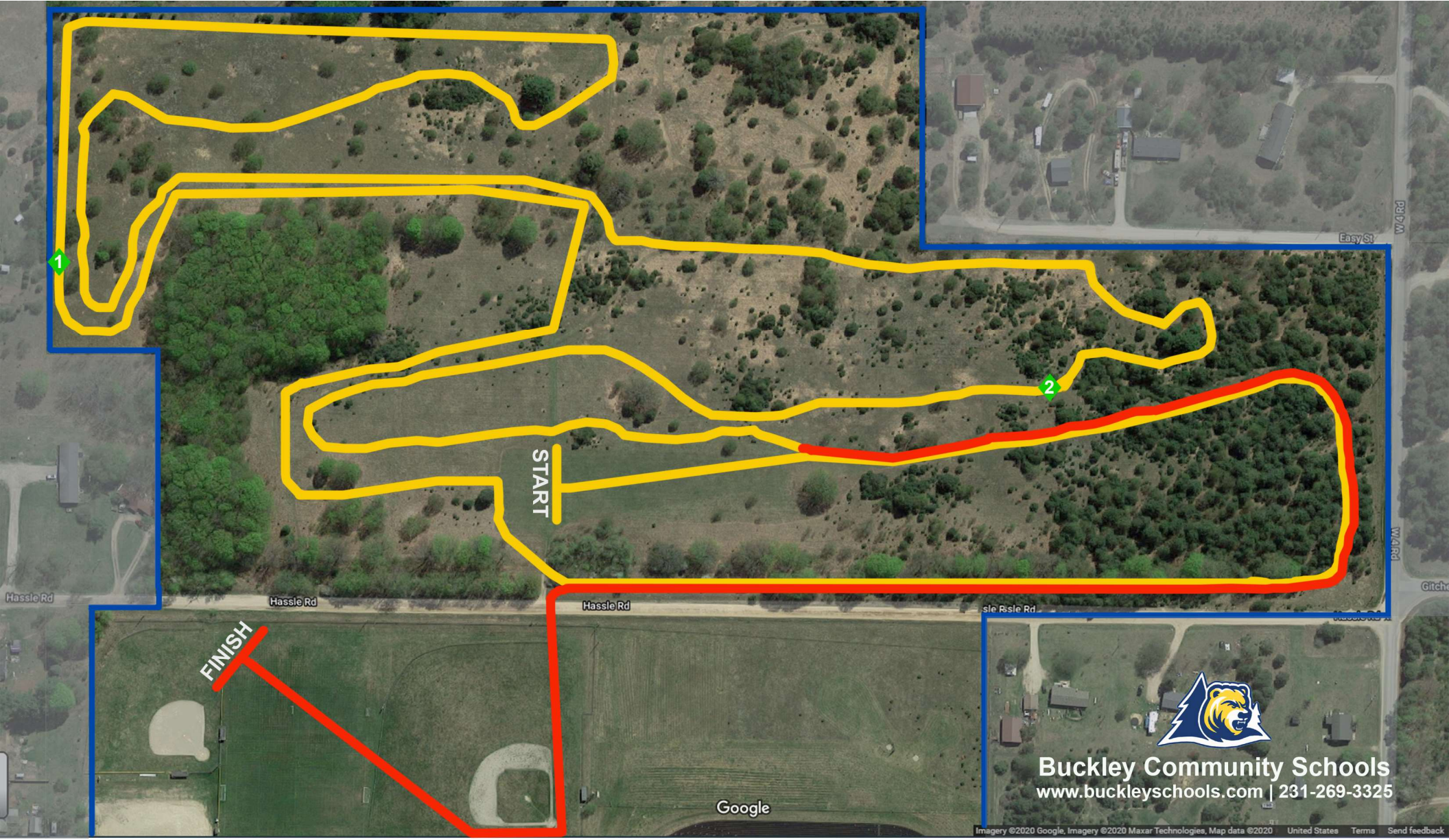
FINALS QUALIFIERS --

- 1) Each Division race will have the top 3 Teams and the first 7 runners not on teams will qualify to FINALS on Saturday, Nov 7 at MICHIGAN INTERNATIONAL SPEEDWAY.
- 2) We will have packets for each qualifier that is mandatory to have for entry to the FINAL event.

AWARDS --

- 1) Trophies and medals and MHSAA FINALS qualifying packets will be delivered to the team areas prior to leaving the site.
- 2) Names and teams will be announced over the sound system. There will be no gatherings to distribute awards.

WE ARE EXCITED TO HOST THESE RACES -- IF YOU HAVE QUESTIONS - PLEASE LET US KNOW.



START

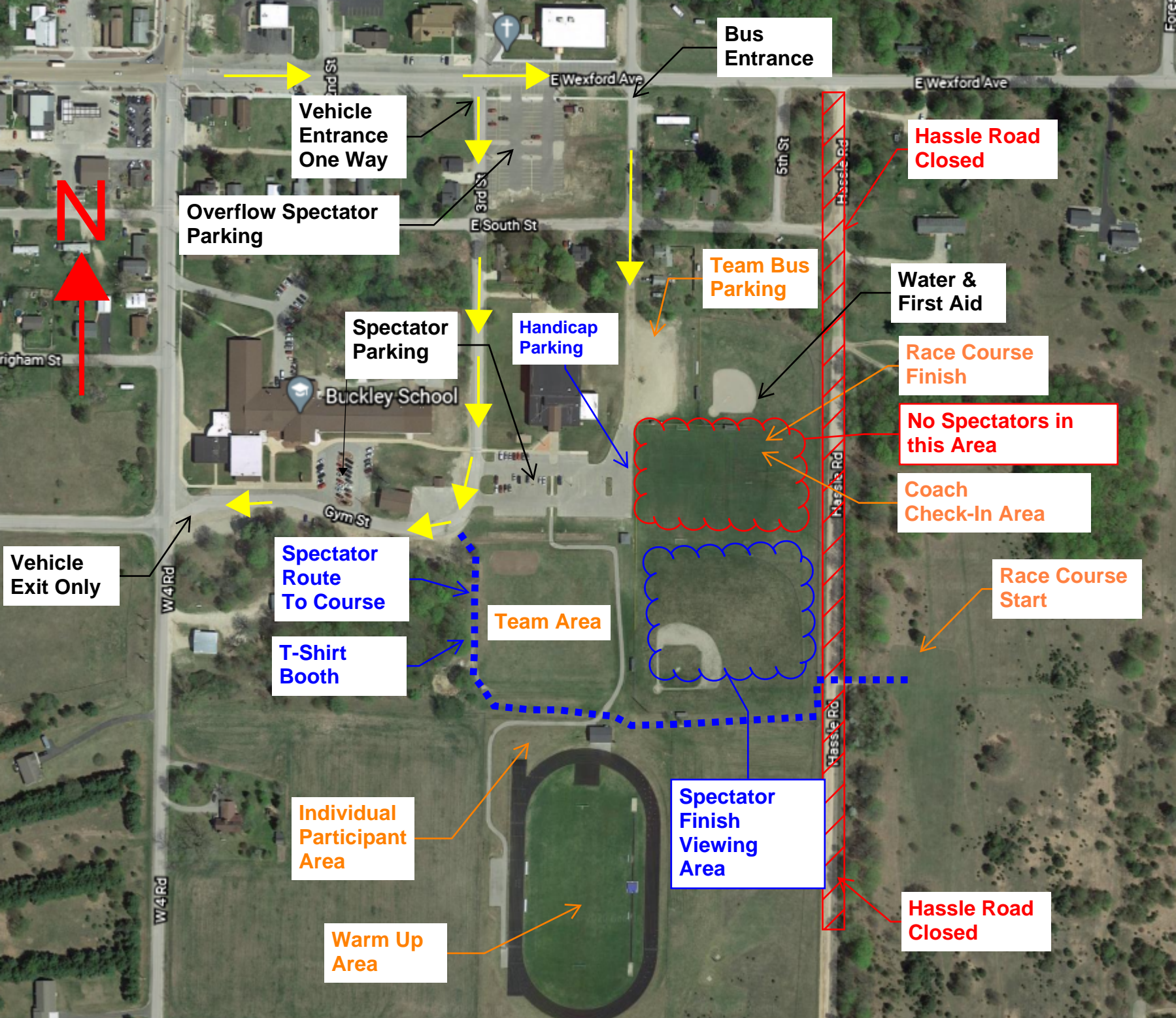
FINISH



Buckle Community Schools
www.buckleschools.com | 231-269-3325

Google

Imagery ©2020 Google, Imagery ©2020 Maxar Technologies, Map data ©2020 United States Terms Send feedback



Buckley Regional Cross Country Site Map

Bus Entrance

Vehicle Entrance One Way

Overflow Spectator Parking

Hassle Road Closed

Team Bus Parking

Water & First Aid

Spectator Parking

Handicap Parking

Race Course Finish

No Spectators in this Area

Coach Check-In Area

Vehicle Exit Only

Spectator Route To Course

Team Area

Race Course Start

T-Shirt Booth

Individual Participant Area

Spectator Finish Viewing Area

Hassle Road Closed

Warm Up Area