



2023-24 Resumption of Play Procedures/Throw-Ins

Rule 7-5-2 thru 4

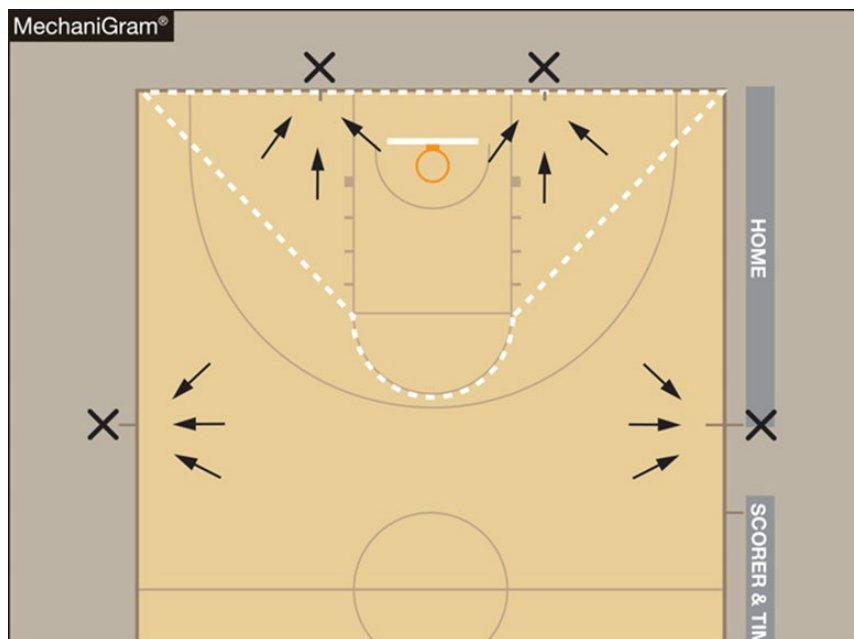
ART. 2 . . . After an out-of-bounds violation in either the frontcourt or the backcourt by either team as in 9-3, the throw-in shall be at the designated spot nearest to where the ball went out of bounds.

ART. 3 . . . After a violation (9-4 through 9-13) by either team, a foul by either team before the bonus is in effect or any other stoppage in play, the throw-in location will be determined by the location of the violation/foul or the location of the ball when the stoppage occurs:

- a. If the throw-in is to be in the team's frontcourt, it shall be at either the nearest 28-foot mark along each sideline or the nearest spot 3-feet outside the lane line along the end line.
- b. If the throw-in is to be in the team's backcourt, the throw-in shall be at the designated spot nearest to where the foul, violation or other stoppage in play occurred.

ART. 4 . . . Officials shall determine the designated spot by using an imaginary line drawn from the intersection of the end line with the sideline to each lane line where it intersects with the free-throw line including the semicircle. If the stoppage of play occurs inside the imaginary line, the designated spot shall be the nearest point on the end line 3-feet outside the lane line. If the stoppage occurs outside the imaginary line, the designated spot shall be the nearest sideline at the 28-foot line.

Proper Frontcourt Throw-in Locations



NOTE: Additional court markings are not required.



Memorandum

To: State Association Basketball Administrators

From: Lindsey Atkinson

Subject: Basketball New 7-5-2 thru 4: Throw-in Interpretation

Date: July 11th, 2023

Several questions regarding the new NFHS Basketball Rules Changes arose during the NFHS Summer Meeting. Committee members and I provided oral interpretations based on our understanding of how the new rules would apply during different scenarios. Now that we have had a chance to discuss further and finalize the language for the rules book, one specific interpretation we provided has evolved. Please review the situation below that will be noted in the 2023-24 NFHS Basketball Case Book as well as in the official interpretations provided by the NFHS in September.

SITUATION: Team A has possession of the ball in its frontcourt when the ball is deflected out of bounds by Team B. The ball exits the court along the end line close to the right sideline. Team A is granted an in-bound at the location where the ball exited the court. While Team A is trying to inbound the ball, Team A calls a time-out. After the time-out, the in-bound spot (a) returns to the same spot; (b) moves to the designated spot 3-feet outside of the lane along the end line. **RULING:** (a) Correct procedure; (b) Incorrect procedure. **COMMENT:** Since the ball was not on the court, the time-out did not create a “stoppage in play” that would move the in-bound spot to one of the four designated spots. Play will continue from the in-bound spot established by the deflection of the ball by Team B. (7-5-2, 7-5-3a)

Thank you for your understanding as new rule interpretations are developed due to the great questions and conversations we have at events like the NFHS Summer Meeting. On behalf of the NFHS Basketball Rules Committee, we thank you for your feedback and support.